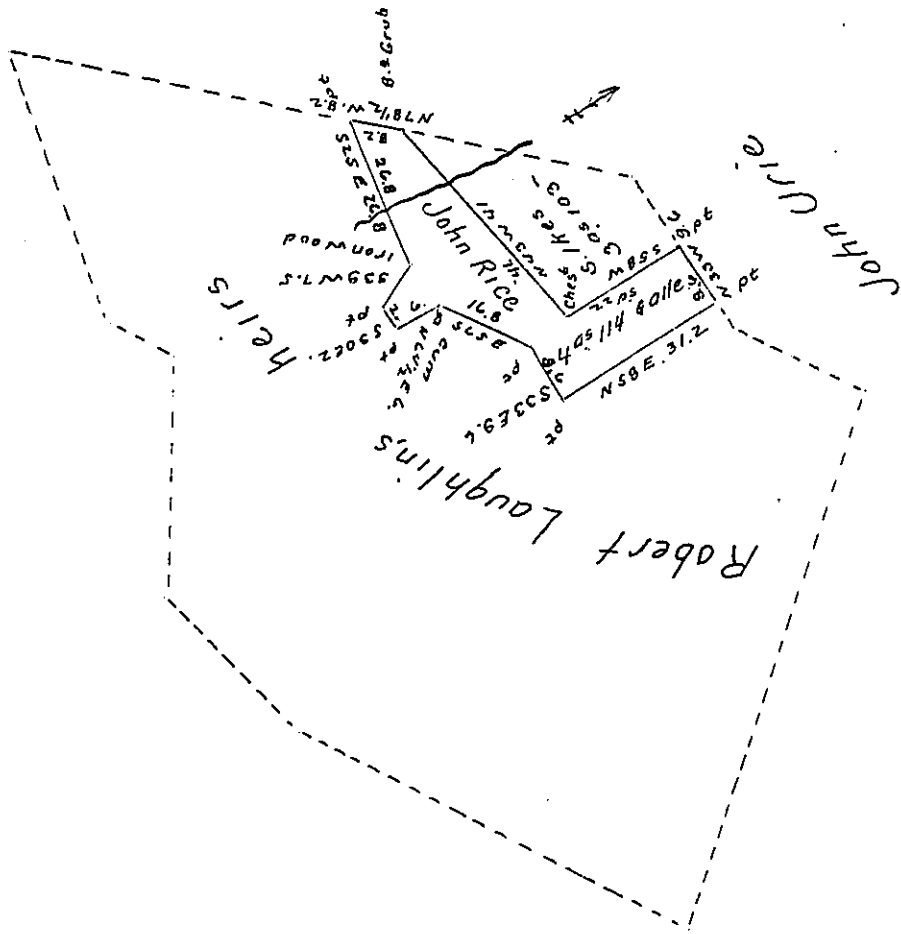


Courses & Distances

- N. 33 W 9.6
- S. 58 W 22.
- N. 43 W 41.
- N. 78 1/2 W 82
- S. 25 E 26.8
- S. 39 W 7.5
- S. 30 E 2.
- N. 64 1/2 E 6.
- S. 65 E 16.8
- S. 33 E 8.6
- N. 58 E 31.2

Containing 4^{as} 114^{pc}
& allowance.



Situate in Saville Township Perry County Containing Four acres and one hundred and Fourteen perches & allowance of Six per Cent for roads &c. Part of 74^{as} 34^{pc}. Surveyed to Robert Laughlin & John Urie the 24th of April 1814. In pursuance of a warrant Granted them dated the 22nd day of March 1814 for 100^{ac} Surveyed as Above the 8th day of November 1828

Gabriel Hiester Esqr. } pr. W^m Wilson D. S.
Surveyor General of Pa }

IN TESTIMONY that the above is a copy of the original remaining on file in the Department of Internal Affairs of Pennsylvania, made conformably to an Act of Assembly approved the 16th day of February, 1833, I have hereunto set my Hand and caused the Seal of said Department to be affixed at Harrisburg, this twenty eighth day of September 1905.

Geo. D. Purvance
Secretary of Internal Affairs.